

Netgear DG834G - Configuration

| | |
|----------|---|
| Model: | Netgear DG834G |
| Website: | http://www.netgear.com.au |

1. Open your web browser and enter the website address <http://192.168.0.1>
2. Click Go
3. A box will appear (see figure 1 below)
4. Enter the Username: admin
5. Enter the Password: password
6. Click OK



Figure 1

7. The Netgear Settings Page will appear. (See figure 2 below)
8. Select No: I want to configure the modem myself
9. Click Next

Netgear DG834G - Configuration



Highway 1

INTERNET SOLUTIONS

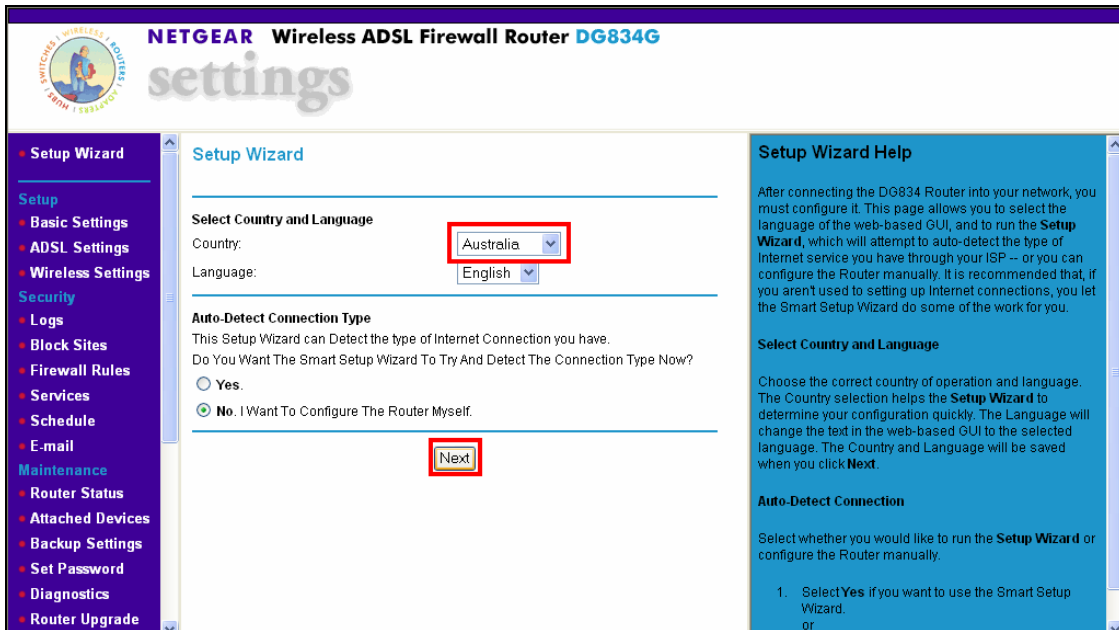


Figure 2

1. Select the Encapsulation as PPPoE (PPP over Ethernet)
2. Enter your Username and Password. Note: If you do not have your Username and Password please contact support on 1300 139 550.

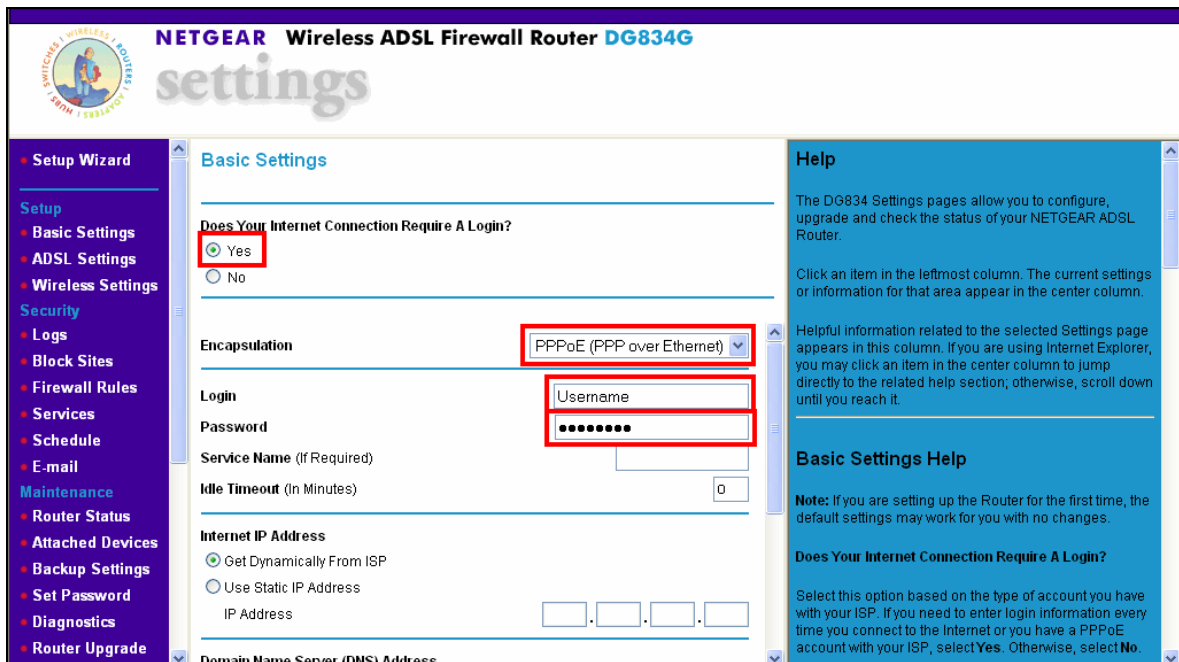


Figure 3

3. Scroll down the page
4. Click Apply (as per figure 4)

Netgear DG834G - Configuration

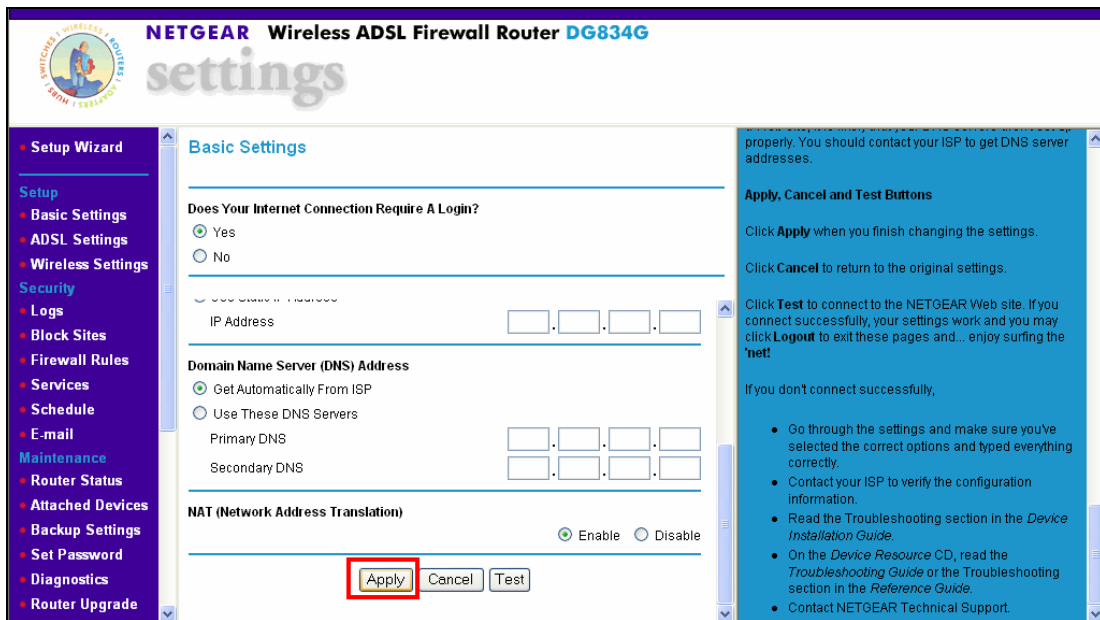


Figure 4

5. Click on ADSL Settings (as per figure 5)

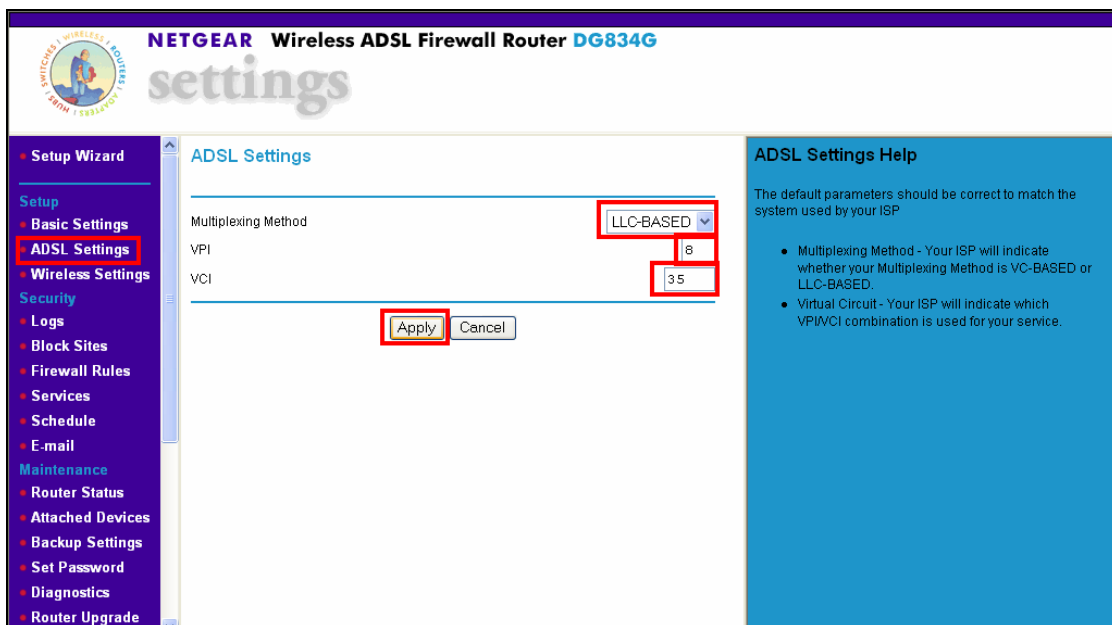


Figure 5

6. Select the Multiplexing Method as: LLC-Based

7. The VPI number should be 8

8. The VCI number should be 35

9. Click on Apply.

10. Once the following steps have been entered you should be connected.

Netgear DG834G - Configuration



11. If you cannot browse for any websites or download your e-mail please contact support on 1300 139 550.