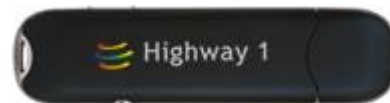


Huawei E160e & E169 – Configuration (Mac OS 10.6, Snow Leopard)

Model:	Huawei E160e Mobile Internet Modem Huawei E169 Mobile Internet Modem
Website:	http://www.huawei.com/en/



1. Plug the Huawei E160 / E169 into an available USB Port.
2. Allow Finder to open a window containing the modem contents.
Select "Wireless Broadband" (see figure 1 below)

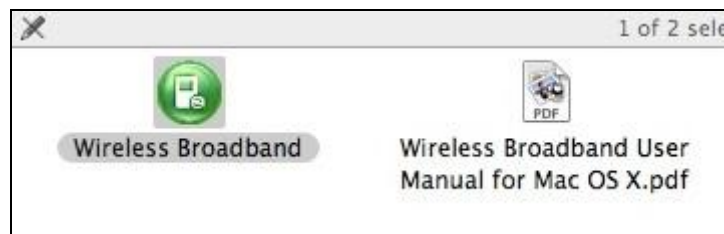


Figure 1

3. Right click on “Wireless Broadband”, select “Show Package Contents” (See figure 2 below)

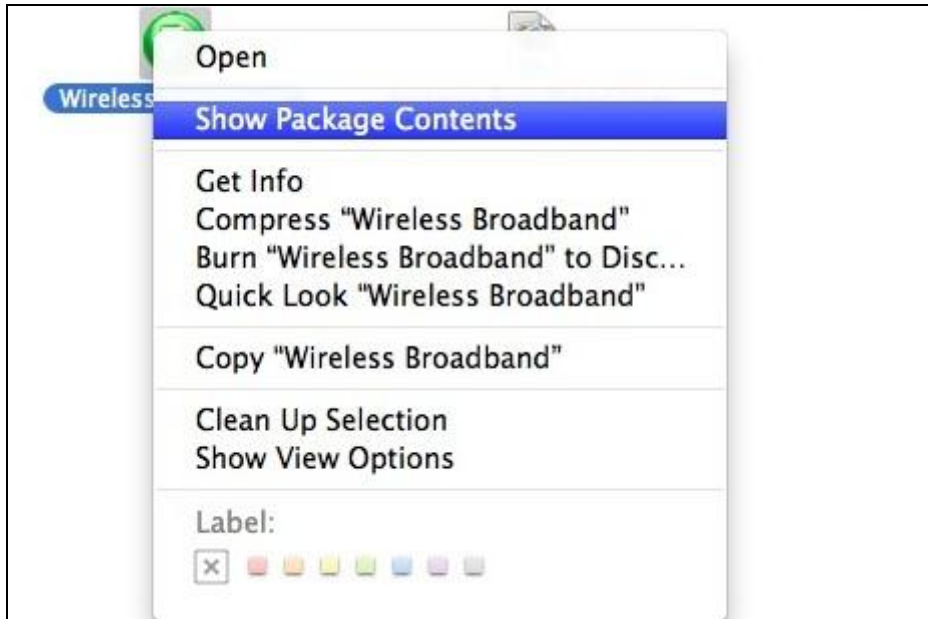


Figure 2

4. A new window will open (or the current window may change) to display a folder called “Contents” (See figure 3 below)



Figure 3

5. Open the “Contents” directory, this will offer multiple options (see Figure 4 below), open “Resources” execute the package “Mobile_Drv_app.pkg”

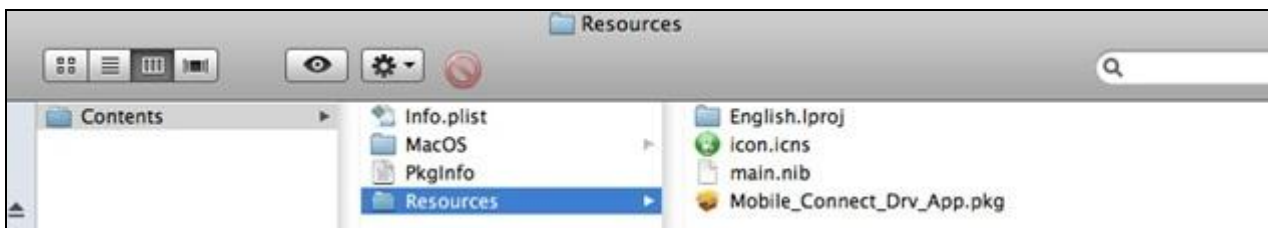


Figure 4

6. Run through the Wireless Broadband Installation

- a. “Welcome to the Wireless Broadband Installer”, click “Continue”



Figure 5

- b. “Software License Agreement”, click “Continue”, if prompted to agree to the terms and conditions, select “Agree” or “Ok”.

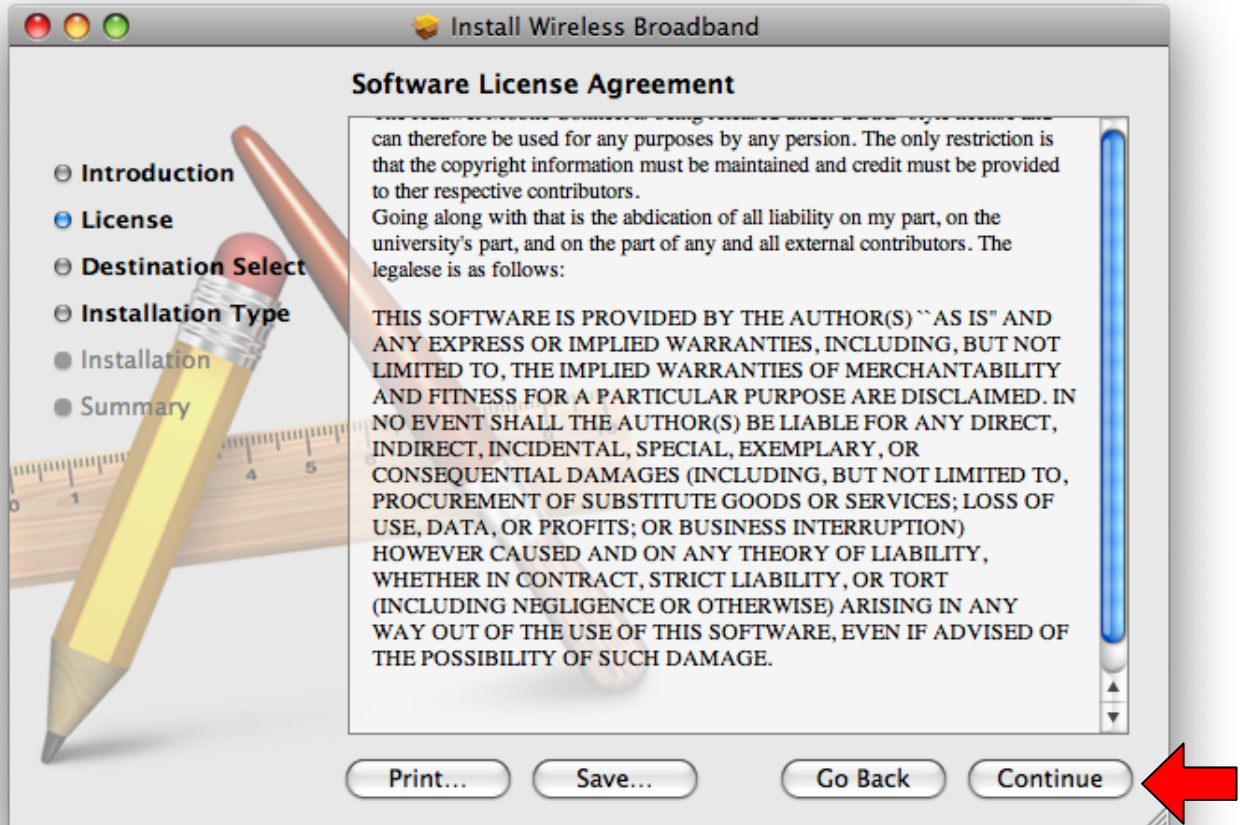


Figure 6

c. “Standard Install”, click “Install”

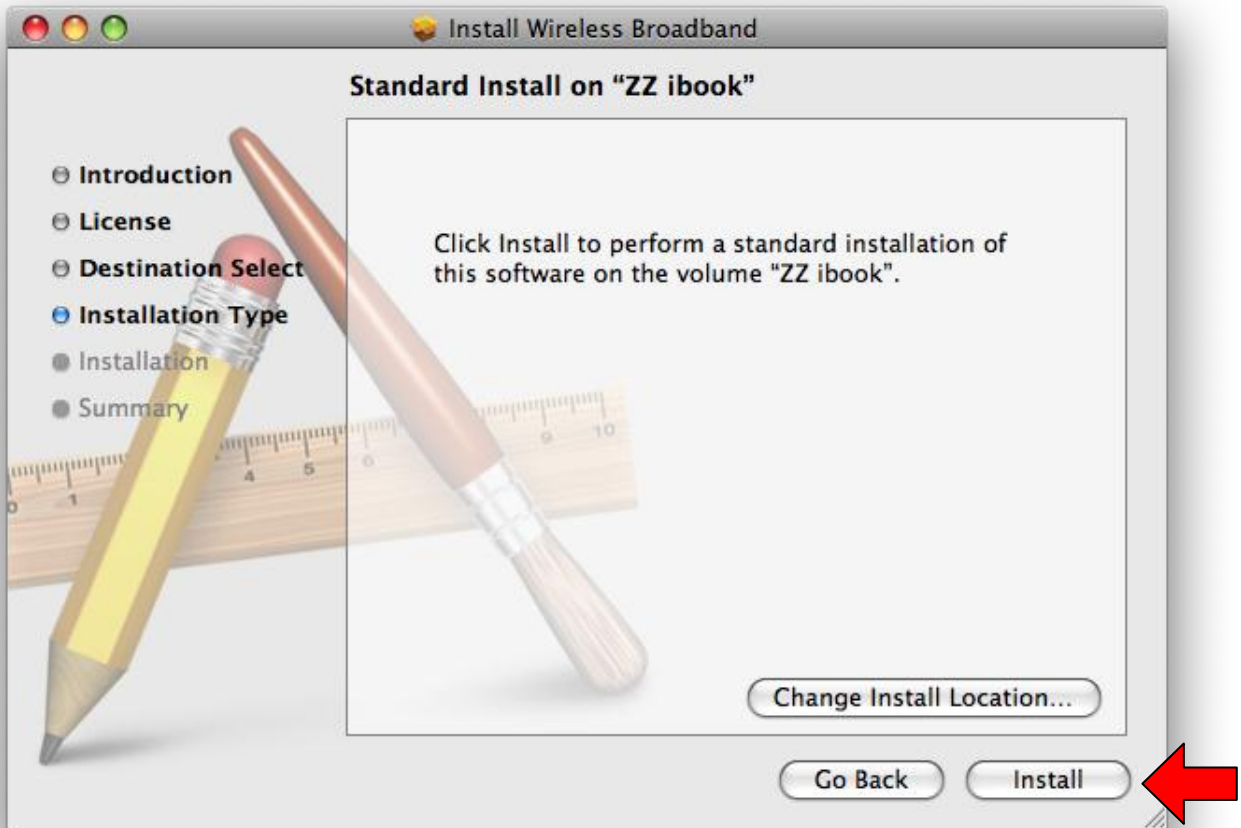


Figure 7

- d. Approval to install, your Mac will request approval to install the application input your “Administrator” credentials, then click “OK”

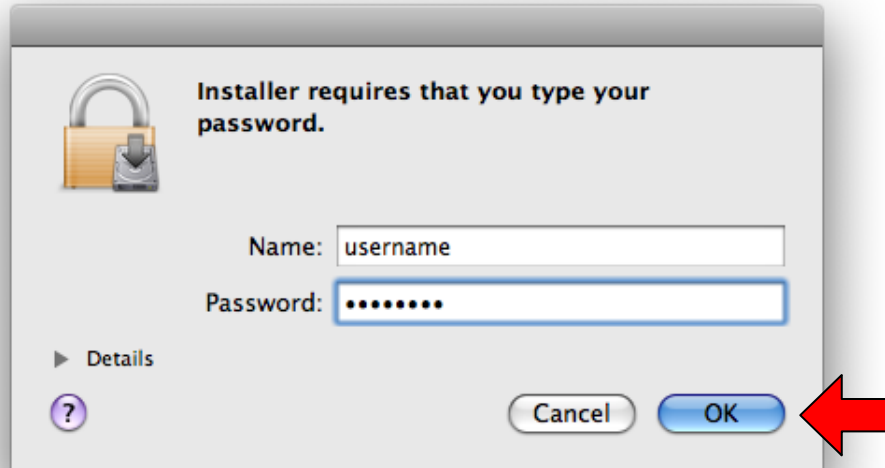


Figure 8

e. Installation will commence.



Figure 9

7. Installation will complete, click “Close” to close the install dialog window.

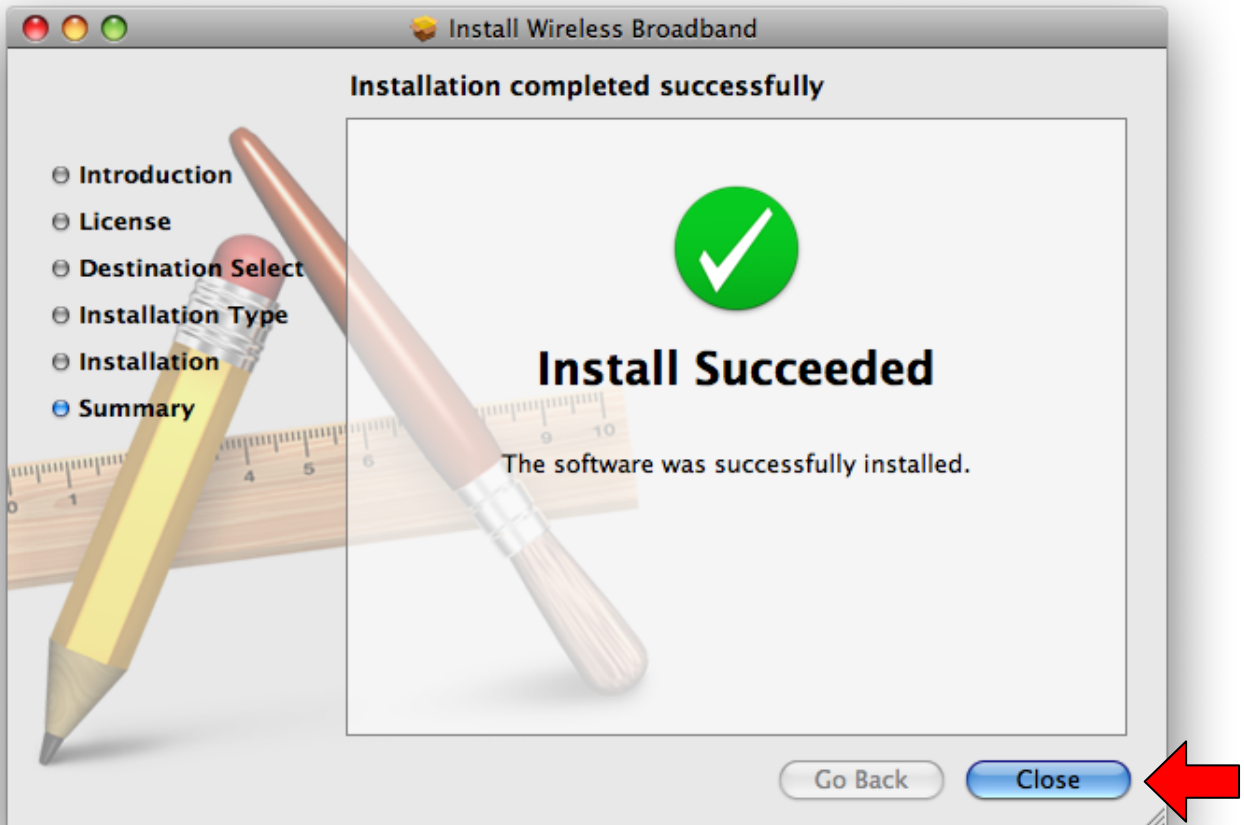


Figure 10

8. Once install has completed, navigate to “Finder” > “Applications”, execute “Wireless Broadband” if requested enter the SP Code as: 357i4

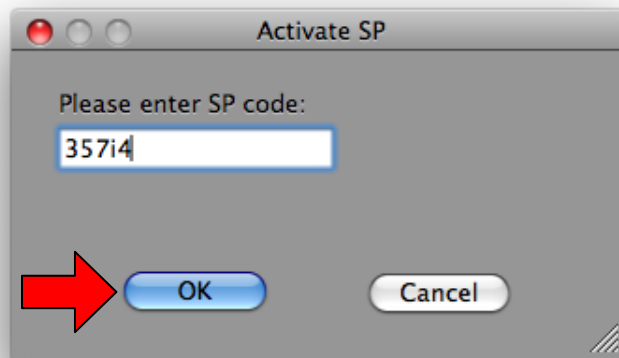


Figure 11

9. Close the Wireless Broadband Application.

10. From the upper left hand corner of the screen select the “Apple” icon then “System Preferences”.

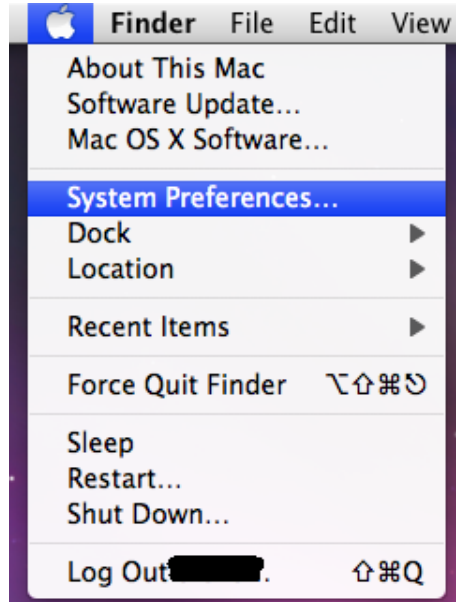


Figure 12

11. From the “System Preferences” dialog window, select “Network”



Figure 13

12. From within “Network” on the left hand pane select the “Huawei Mobile” option, see screenshot below.

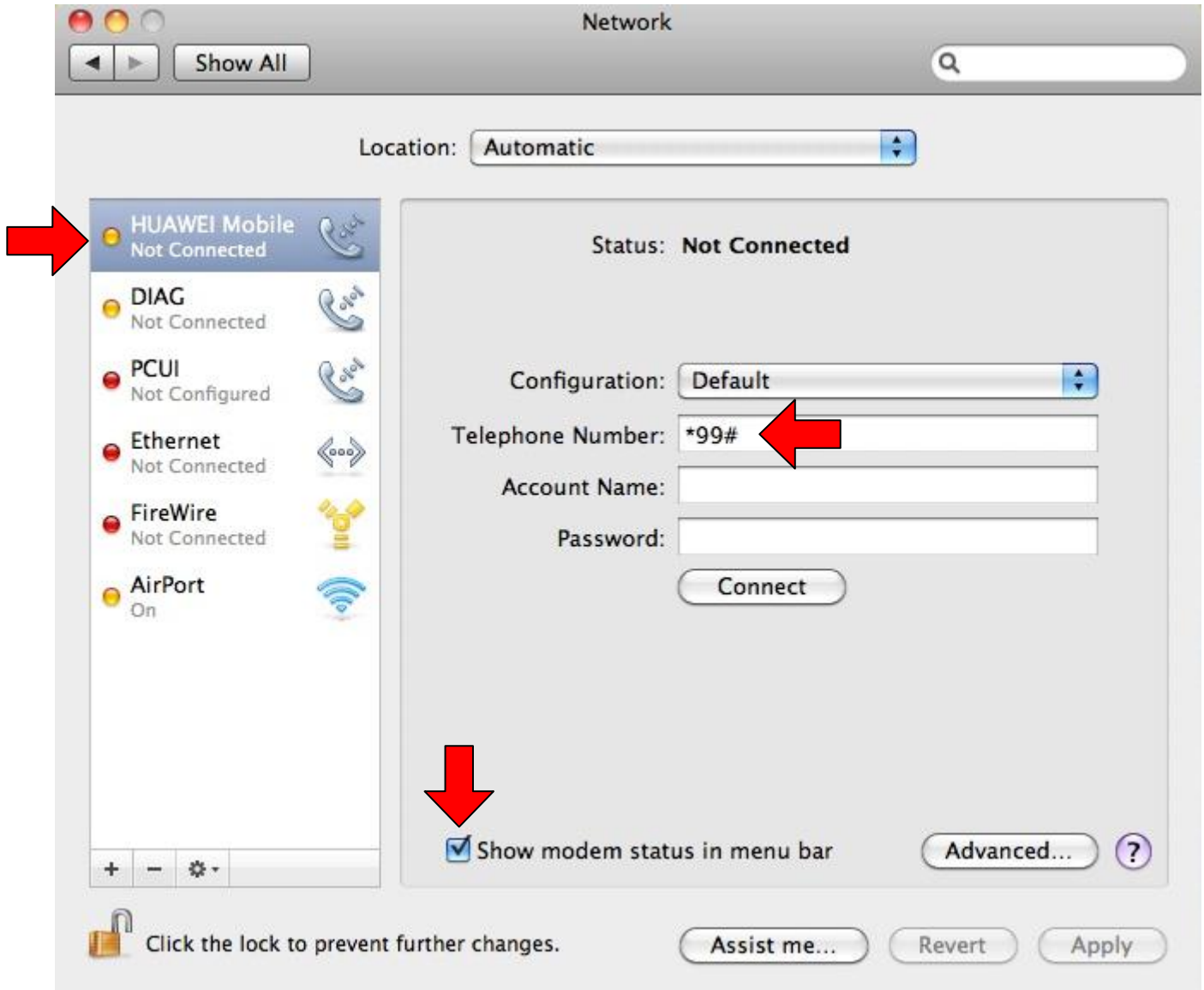


Figure 14

13. Leave “Configuration” as default, but enter *99# as the telephone number (see figure 14 above).

14. Tick the box at the bottom of the dialog window “Show modem status in menu bar” Apply the setting (see figure 14 above).

15. Now click the “Advanced button” (see figure 15 below)

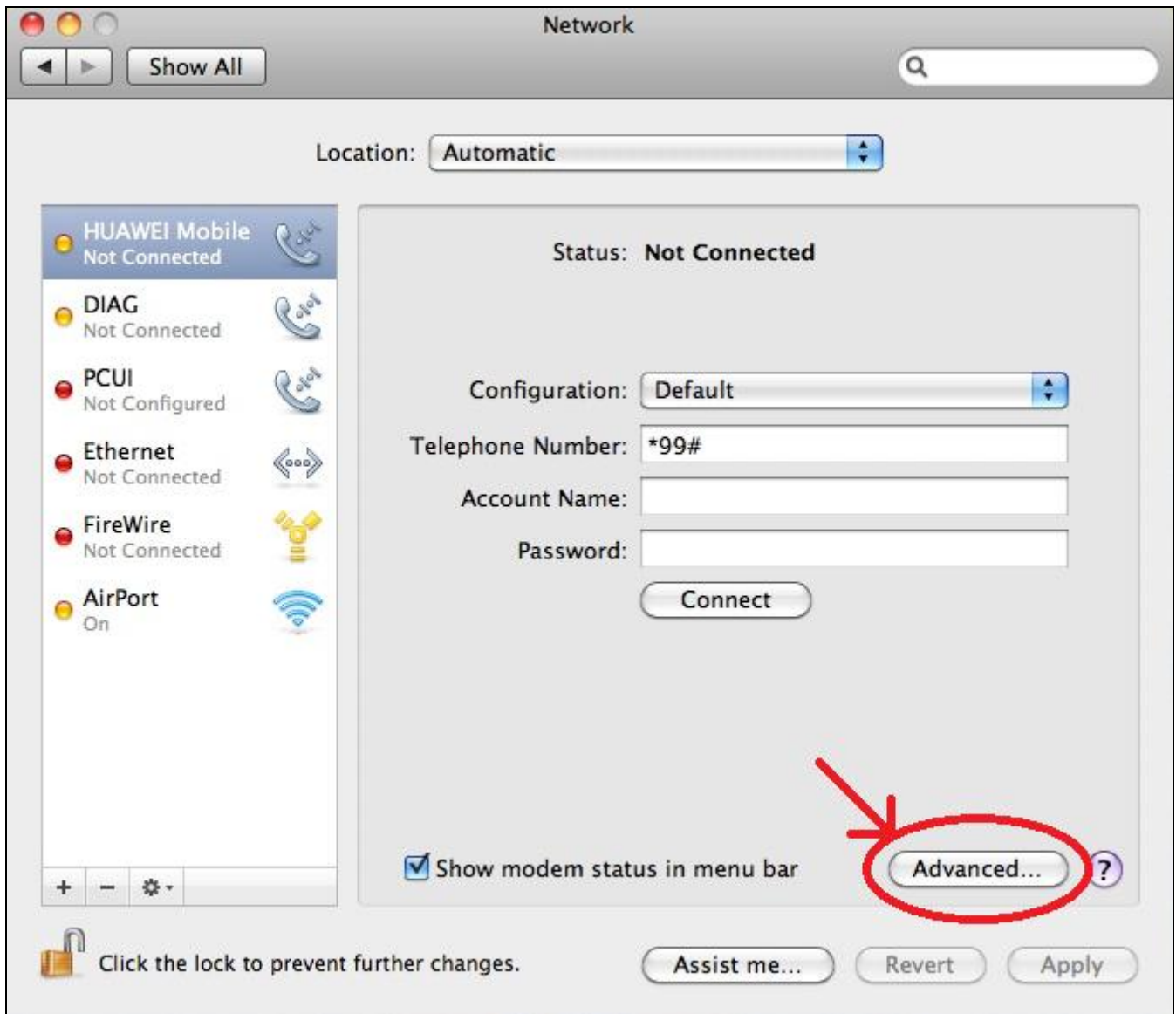


Figure 15

16. “Advanced” Network options for the Huawei Mobile will display, set the following:

- **Vendor:** Generic
- **Model:** GPRS (GSM/3G)
- **APN:** splns357

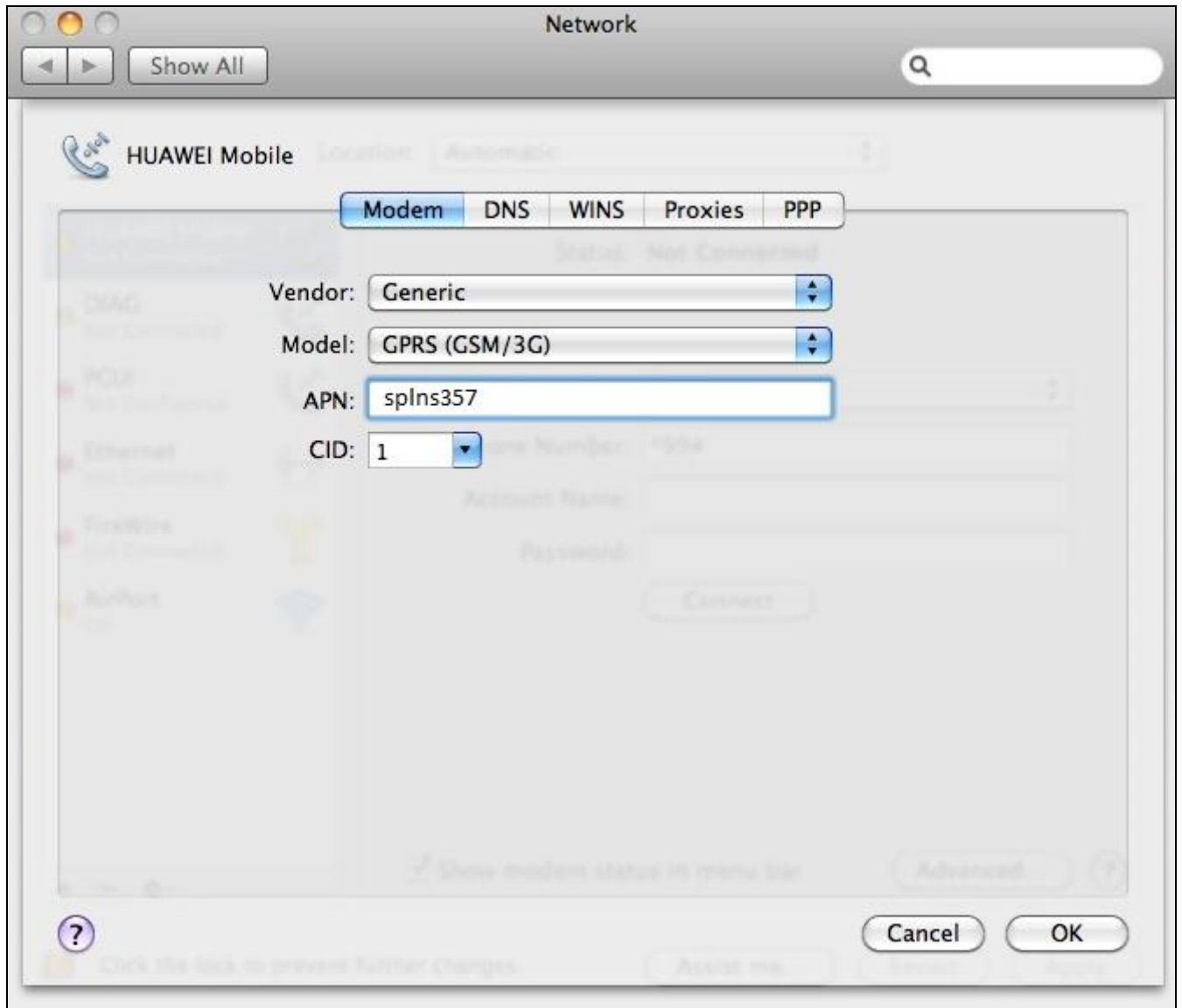


Figure 16

17. Click ok, this will close the “Advanced Network Options for Huawei” and return you to the “Network” dialog, apply the settings once more.

18. The connection is now setup. You can control the connection from the “Menu Bar” along the top of your screen (See figure 17 below).



Figure 17

19. Select the “Phone” icon, then select “Connect HUAWEI Mobile” to connect (See figure 18 below).

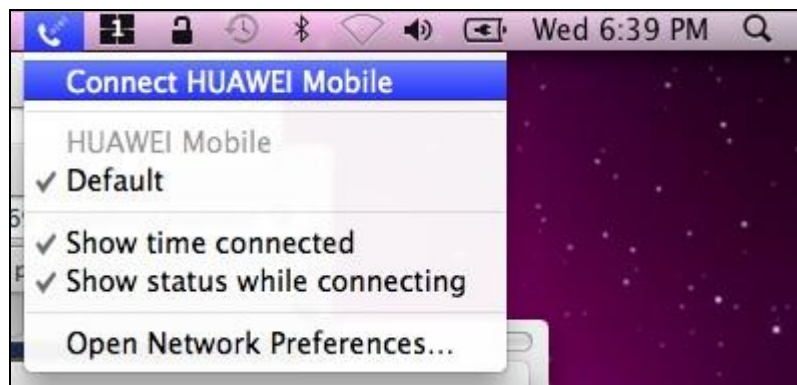


Figure 18

20. The icon will change to a Phone with dashes coming out of it once connected to indicate connection / data flow, there is also an indicator to show duration of connection (see figure 19 below).



Figure 19

21. Click the “Phone” icon once more and select “Disconnect HUAWEI Mobile” when you want to disconnect from the internet (see figure 20 below).



Figure 20

22. If you cannot browse for any websites or download your e-mail please contact support on 1300 139 550.