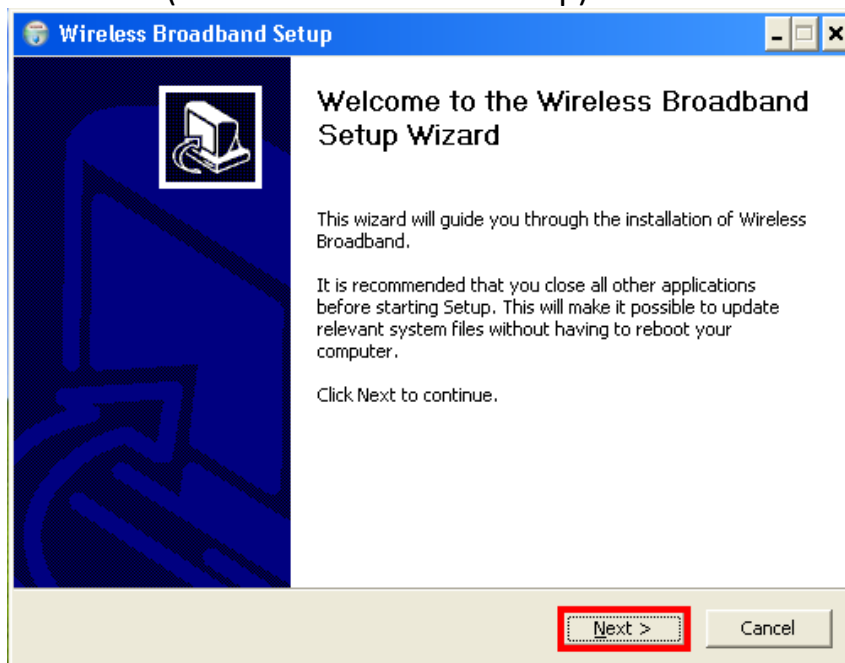


Huawei E169 - Configuration

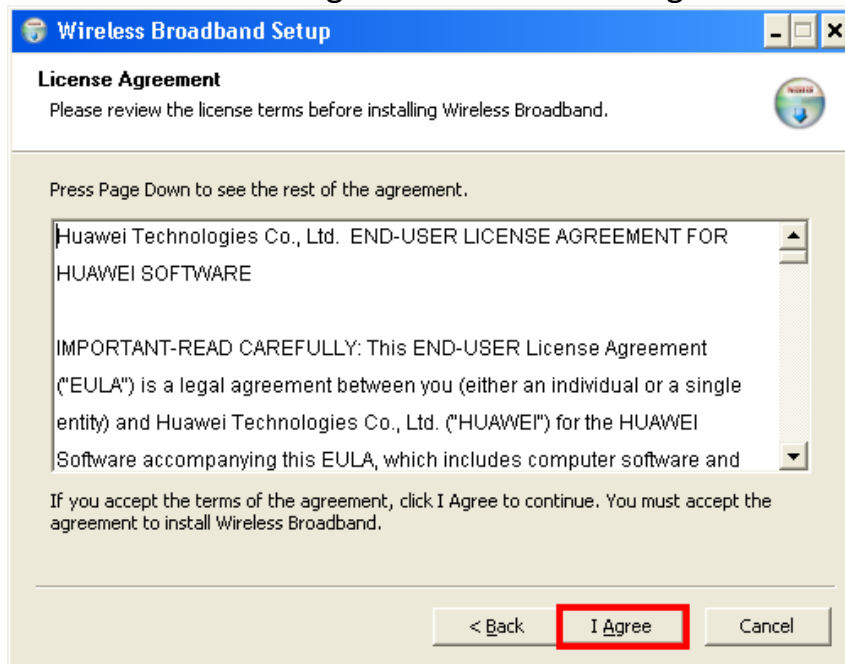
Model:	Huawei E169 USB HSDPA Modem
Website:	http://www.huawei.com
Supported OS:	Windows 2000, Windows XP, Windows Vista (Please use this guide.) (Apple MAC OSX10.3.7 users please call our service desk on 1300 139 550.)

1. Insert the USB key into your computer.
2. The software installation may begin automatically. If it does then skip to step 7. If not then complete then go to step 3.
3. This will create a new drive on your computer
4. Open Windows Explorer and find the new drive. It will be called "Wireless BB"
5. Double click "Autorun.exe"
6. This will start the program installation
7. Click Next (Wireless Broadband Setup)

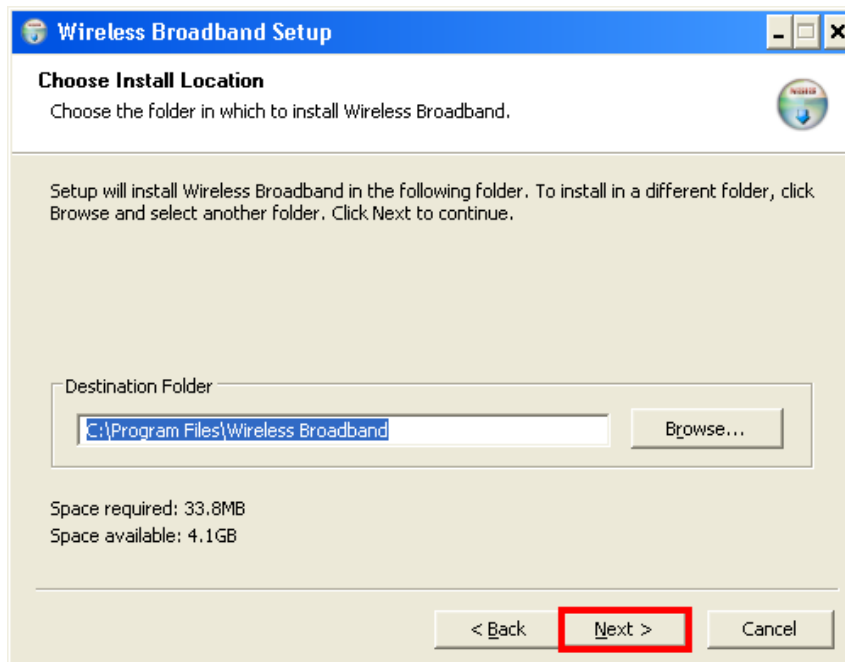


Huawei E169 - Configuration

8. Review the License Agreement and Click I Agree

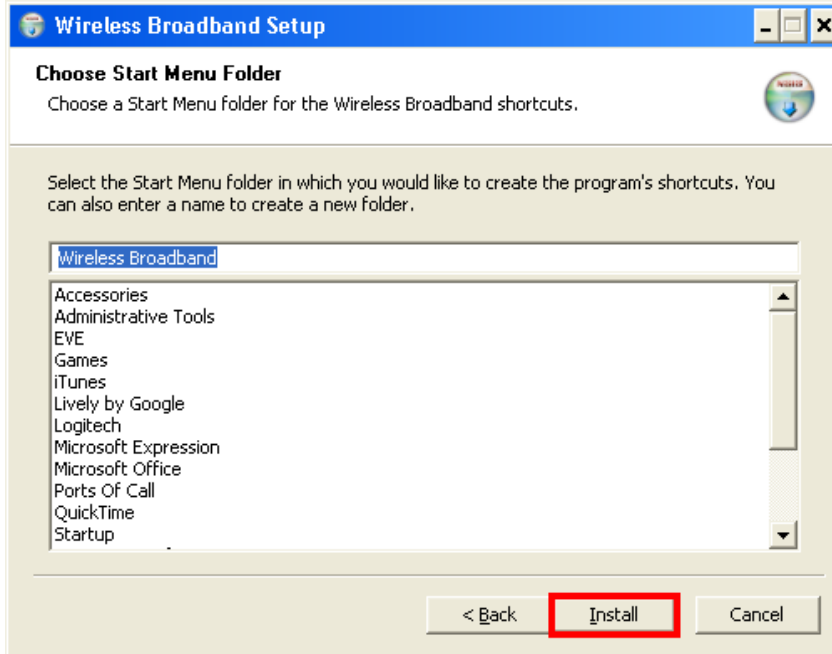


9. Click Next (Install Location C:\Program Files\Wireless Broadband)

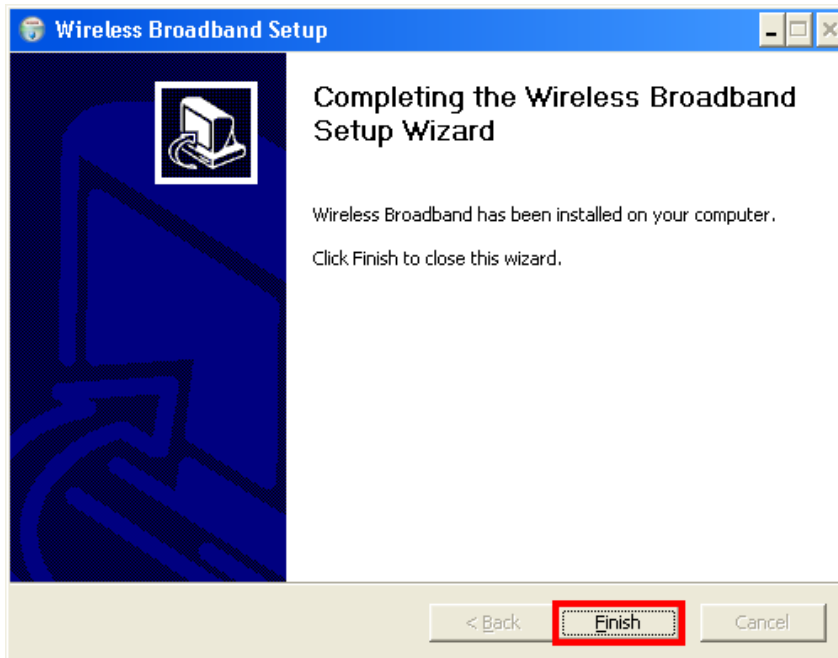


Huawei E169 - Configuration

10. Click Install



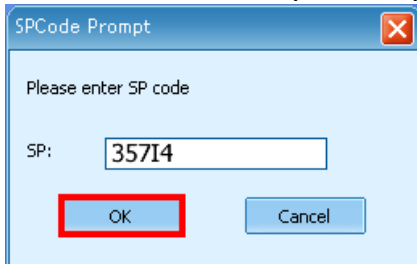
11. Click Finish



12. Click Start\Program Files\Wireless Broadband\Wireless Broadband

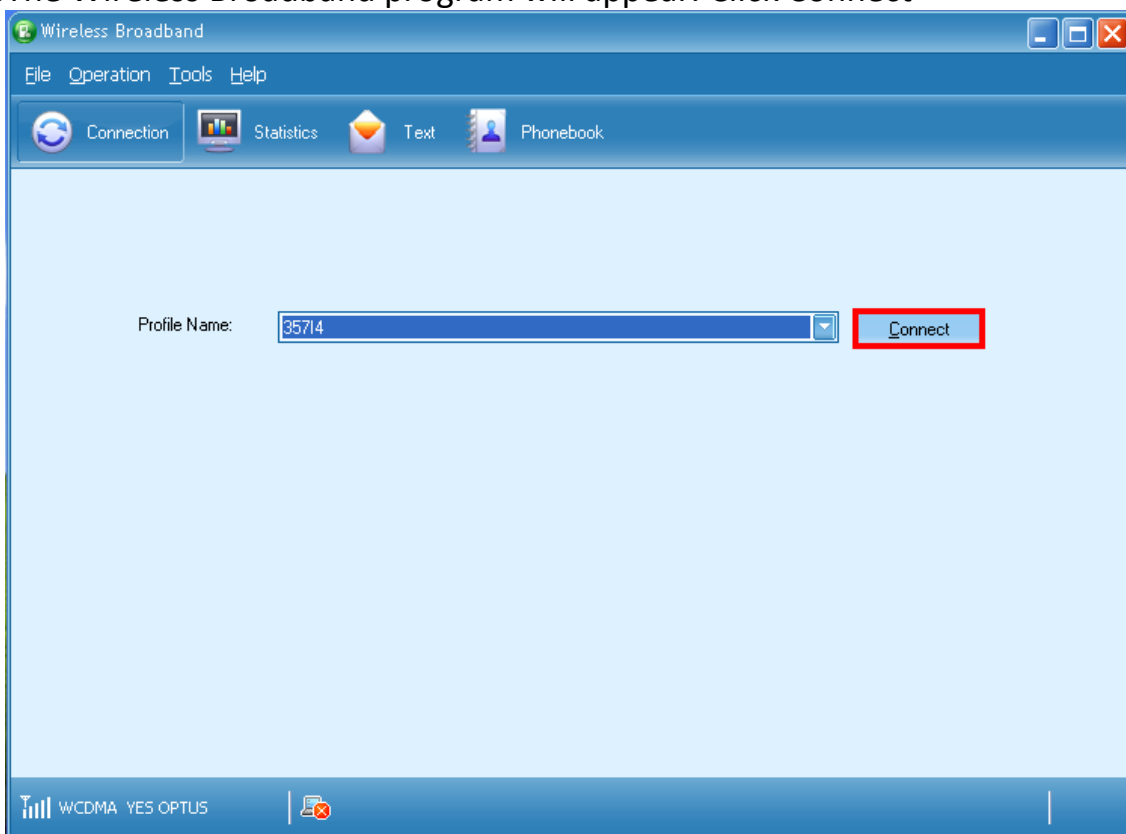
Huawei E169 - Configuration

13. The SP Code Prompt will appear, type in 35714 (Three, Five, Seven, Igloo, Four)



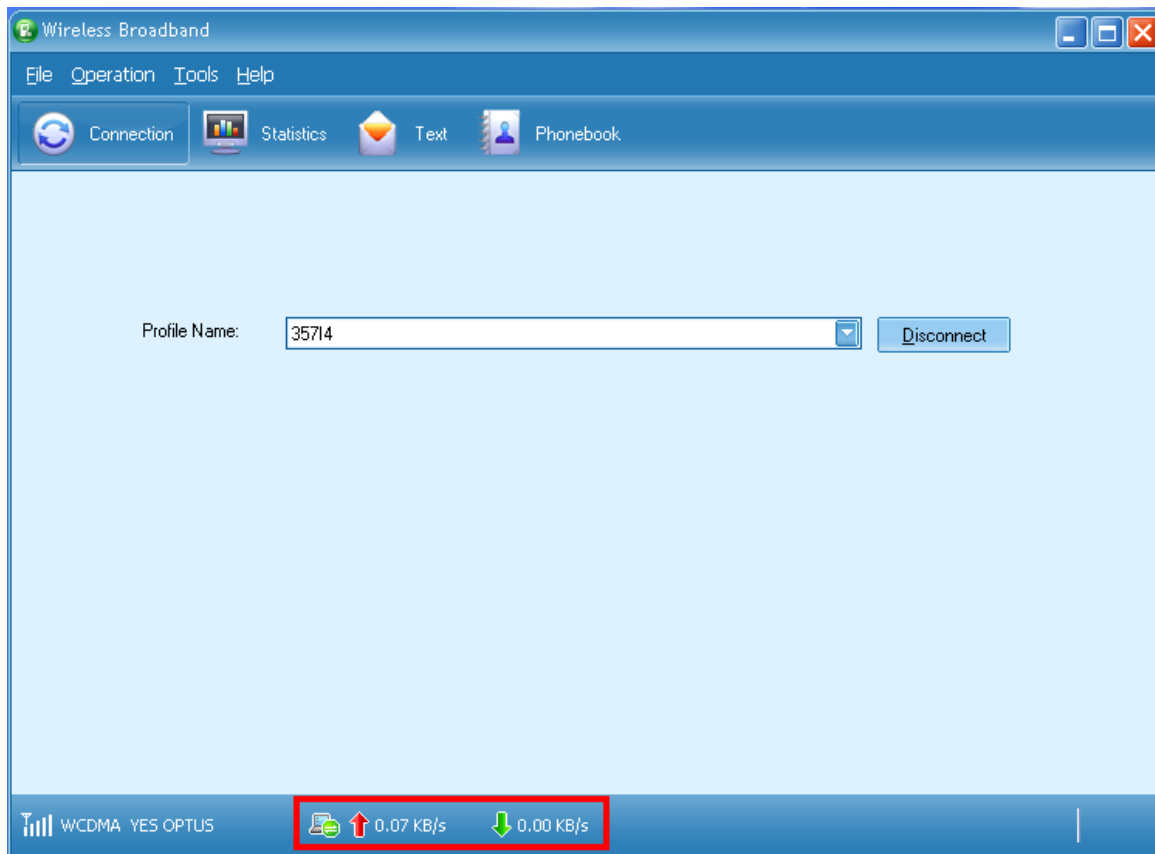
14. Click OK

15. The Wireless Broadband program will appear. Click Connect



16. After a few moments you should connect to the internet. The program will show an upload and download pictures. (See next page)

Huawei E169 - Configuration



17.If you cannot browse for any websites or download you e-mail please contact support on 1300 139 550.