

D-Link 504G - Configuration

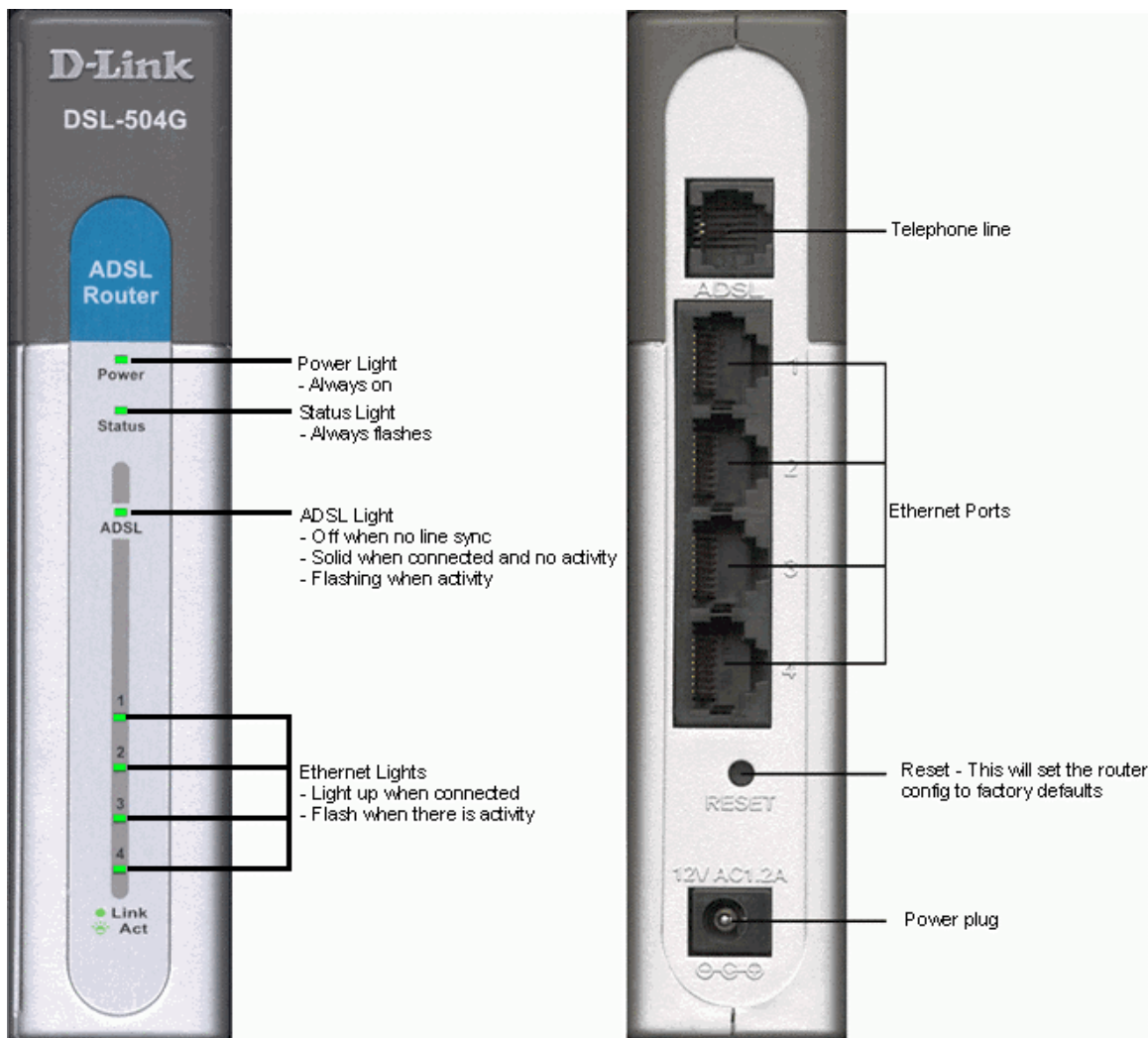


Highway 1

INTERNET SOLUTIONS

Model:	D-Link 504G
Website:	http://www.dlink.com.au

1. Plug all cables in as shown below before switching on the power.
2. As soon as you turn the power on, all lights will come on, and then most will turn off.



3. Ensure that the phone line is plugged into the ADSL router, and make sure filters are attached to any other devices, such as modems, phones, faxes, or EFTPOS machines that are on the same line as the ADSL modem.
4. Open your web browser and enter the website address <http://10.1.1.1>
5. Click Go
6. A box will appear (see figure 1 below)
7. Enter the Username: admin

D-Link 504G - Configuration

8. Enter the Password: admin
9. Click OK



Figure 1

10. Click on the WAN button (see figure 2 below)
11. Set Pvc = Pvc0
12. Set VPI = 8
13. Set VCI = 35
14. Set Virtual Circuit = Enabled
15. Select PPPoE/PPPoA
16. Set Connection Type = PPPoE LLC
17. Enter your username and password. Call Highway 1 if you do not have your username or password.
18. Click Apply

D-Link 504G - Configuration



Highway 1

INTERNET SOLUTIONS

The screenshot shows the configuration interface for a D-Link 504G router. On the left sidebar, there are buttons for 'Wizard', 'WAN' (highlighted in yellow), 'LAN', 'DHCP', and 'DNS'. The main content area has tabs for 'Home', 'Advanced', 'Tools', 'Status', and 'Help'. Under the 'Advanced' tab, the 'ATM VC Setting' section is active, with a note: 'Please select the appropriate option to connect to your ISP.' The settings are: PVC (Pvc0), VPI (8), VCI (35), and Virtual Circuit (Enabled). Below this is the 'WAN Settings' section with four radio button options: 'Dynamic IP Address', 'Static IP Address', 'PPPoE/PPPoA' (selected), and 'Bridge Mode'. Each option has a descriptive text. The 'PPPoE/PPPoA' section includes: Connection Type (PPPoE LLC), Username (username), Password (masked with dots), and Authentication (PAP).

Figure 2

19. Click on the DNS button (see figure 3)
20. Set Preferred DNS Server to 203.7.224.1
21. Set Alternate DNS Server to 203.25.27.50
22. Click Apply
23. Click Continue

D-Link 504G - Configuration



Highway 1

INTERNET SOLUTIONS

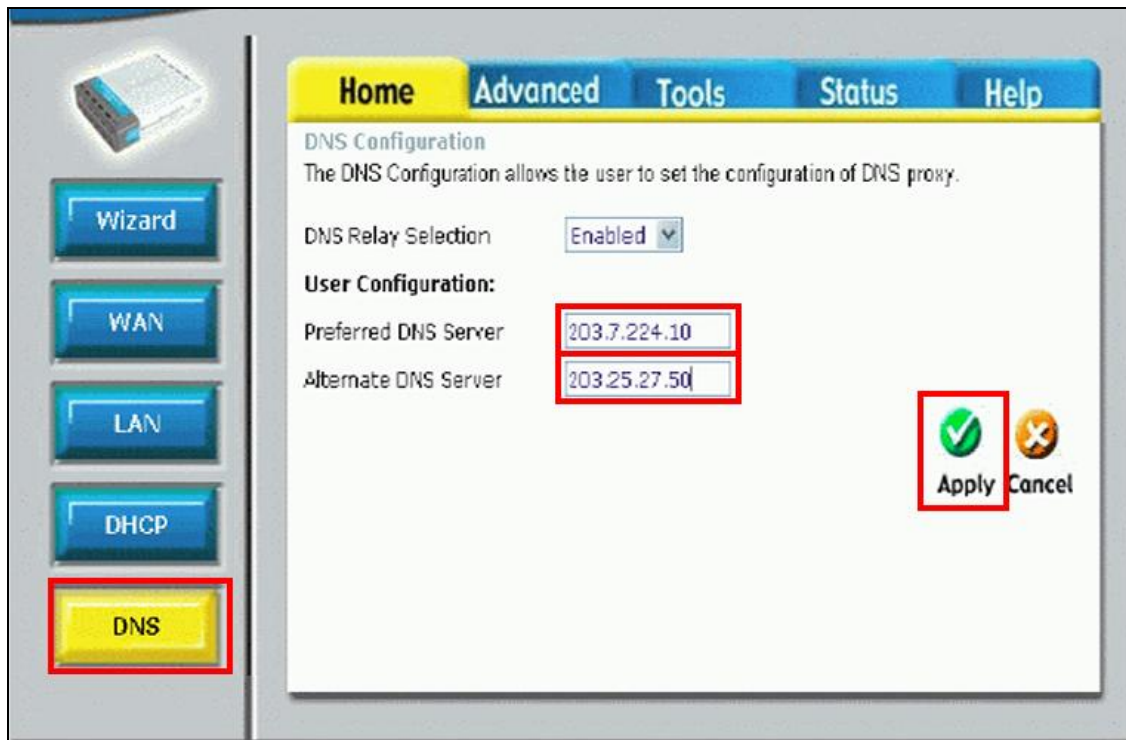


Figure 3

24. Click the Tools TAB (See figure 4)
25. Click the Misc button.
26. Click Save and Reboot button
27. Your modem will reboot and be unavailable for 30 seconds.
28. Click Continue after 30 seconds.

D-Link 504G - Configuration



Highway 1

INTERNET SOLUTIONS

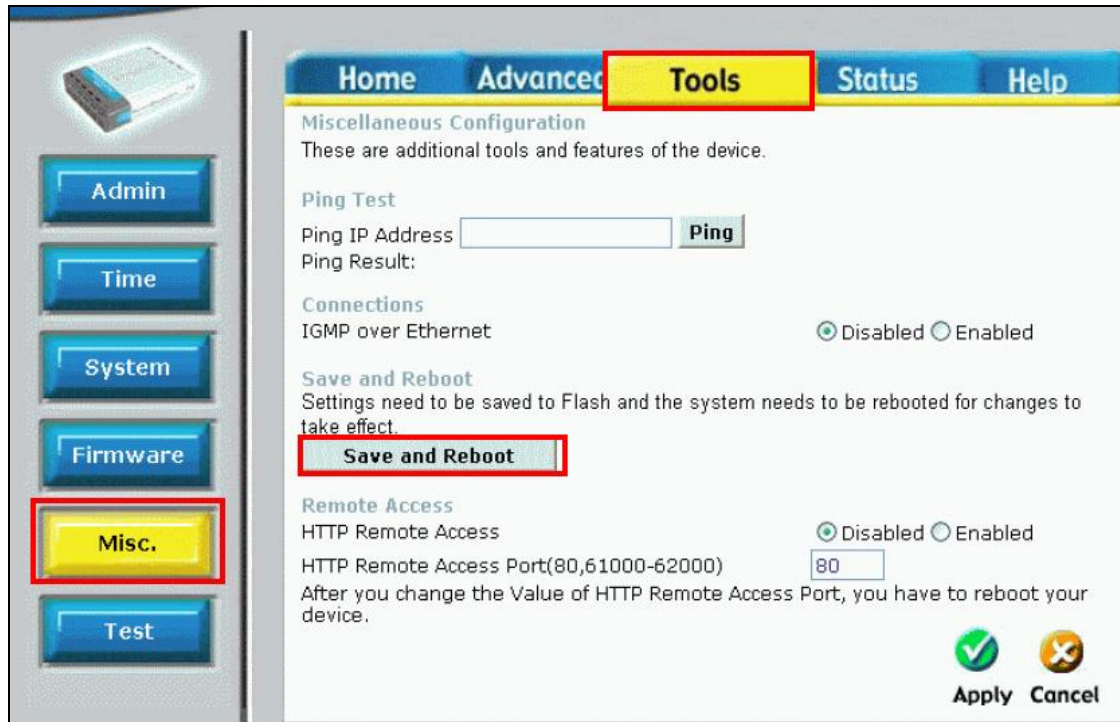


Figure 4

29. Click the Status TAB. (see figure 5)
30. Click the Device Info button.
31. Once you are connected, you should see the Connection Status as Green, and be assigned an IP address, Netmask and Gateway.

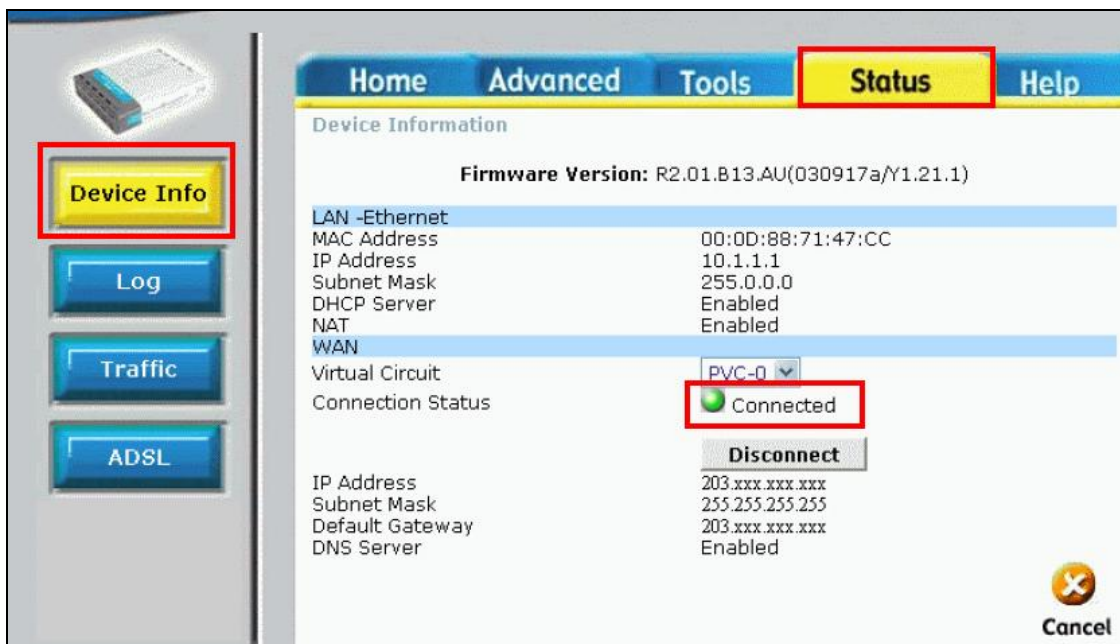


Figure 5